

## PRODUCT DATA SHEET

AM 130 / 300, AM 135 / 300, AM 140 / 420 K, AM 140 / 420 N, AM 165 / 450, AM 180 / 500

### DESIGN

Two-piece, halogen-free sleeve shells made of transparent and impact-resistant polycarbonate with a special shape to accommodate a clamping ring. The branch cable is placed parallel to the main cable. Easy assembly thanks to hinge technology and pre-punched foam seals with break-out rings that can be glued in place if required and can be adjusted to the cable diameter without tools. The cable joint is protected electrically and mechanically by casting with ecologically optimized casting compound ISO-PUR® K2000, thin casting compound ISO-PUR® K762, label-free casting compound ISO-CAST® BRH or training-free casting compound ISO-PUR® K2000H.

### USE

The listed cable joints are preferably used as branch cable joint using compact clamping rings. AM 140 / 420 N and AM 180 / 500 are also suitable for shielded cables.

### TESTS

- DIN VDE 0278 part 3
- DIN VDE 0291 draft 6 / 97
- DIN VDE 0291 part 2
- DIN EN 50393 (VDE 0278-393)
- DIN EN 50655-1:2018-06
- E DIN EN 60455-3-8:2018-02
- prHD 631.1
- European standard HD 623S / 1.97
- KEMA - tested (10 m water pillar)
- Additional high current (short circuit) test (VEW - PA 003)
- Control of each batch acc. DIN / ISO 9001



AM 140 / 420 N

### ASSEMBLY

Branch and main cables are connected with common compact clamping rings. With these rings, it is not necessary to remove the core insulation. The fully assembled cable joint is poured with cast resin through the large filling opening and closed with sliding covers. Fast filling of the cable ditch is possible due to the rapid hardening of the casting compound.

### DELIVERY

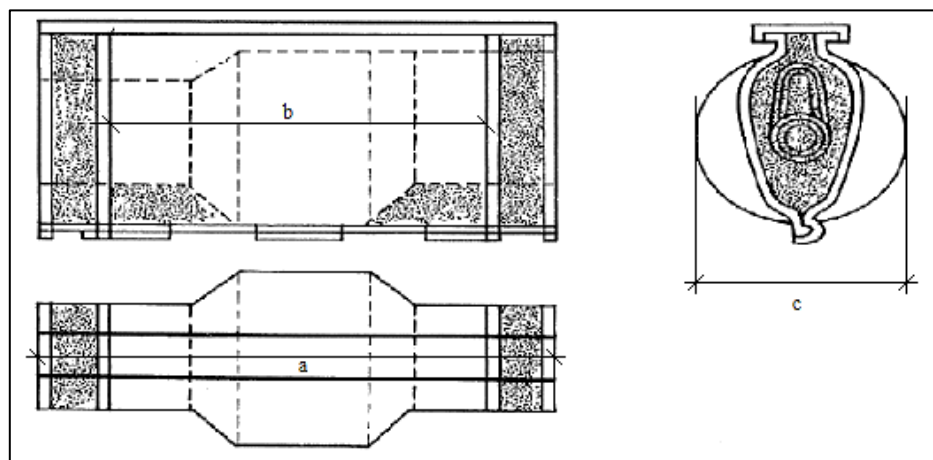
Sleeve shells, seals, sliding covers, auxiliary material, cast resin, assembly instructions. On request, cast resin in two-chamber bags, cans, or hardener in reusable bottles.

### ACCESSORIES (ON REQUEST)

Compact clamping rings, cable clamps, compression connectors, solderless grounding set.

## DIMENSIONS OF CABLE CASES AND EXAMPLES OF SUITABLE CABLE/JOINT COMBINATIONS

Cable joint type c / a	Outside length a (mm)	Inside length b (mm)	Max. diameter c (mm)	Volume (ltr.)	Max. diameter main / branch cable (mm)	Suitable cable types	Main or connection cable dimensions (mm <sup>2</sup> )	Branch cable dimensions (mm <sup>2</sup> )
AM 130 / 300	300	235	130	2,1	55 / 32	N(A)YY NA2XY	4 x 16 bis 4 x 185 4 x 16 bis 4 x 185	4 x 10 bis 4 x 70 4 x 10 bis 4 x 70
AM 135 / 300	300	235	135	2,3	50 / 32	N(A)YY NA2XY	4 x 16 bis 4 x 185 4 x 16 bis 4 x 185	4 x 10 bis 4 x 70 4 x 10 bis 4 x 70
AM 140 / 420 K	420	270	140	3,25	60 / 45	N(A)YY NA2XY	4 x 50 bis 4 x 240 4 x 50 bis 4 x 240	4 x 16 bis 4 x 95 4 x 16 bis 4 x 95
AM 140 / 420 N	420	350	140	3,9	60 / 45	N(A)YY NA2XY N(A)YCWY N(A)KBA N(A)KLEY	4 x 50 bis 4 x 240 4 x 50 bis 4 x 240 3 x 35/35 bis 3 x 150/150 4 x 35 bis 4 x 120 3 x 70 bis 3 x 150	4 x 16 bis 4 x 120 4 x 16 bis 4 x 120 3 x 25/25 bis 3 x 70/70 4 x 16 bis 4 x 35 4 x 16 bis 4 x 50
AM 165 / 450	450	404	165	5,8	65 / 58	N(A)YY NA2XY	4 x 95 bis 4 x 240 4 x 95 bis 4 x 240	4 x 50 bis 4 x 185 4 x 50 bis 4 x 185
AM 180 / 500	500	440	180	9,2	65 / 50	N(A)YY NA2XY N(A)YCWY N(A)KBA N(A)KLEY	4 x 50 bis 4 x 240 4 x 50 bis 4 x 240 3 x 35/35 bis 3 x 185/185 4 x 35 bis 4 x 150 3 x 70 bis 3 x 185	4 x 16 bis 4 x 150 4 x 16 bis 4 x 150 3 x 25/25 bis 3 x 95/95 4 x 16 bis 4 x 50 4 x 16 bis 4 x 95



### SELECTION EXAMPLE

Cable data:

Main cable NAYY 4 x 185 mm<sup>2</sup>

Branch cable NYY 4 x 50 mm<sup>2</sup>

House interfacing

Smallest suitable cable joint: AM 130/ 300